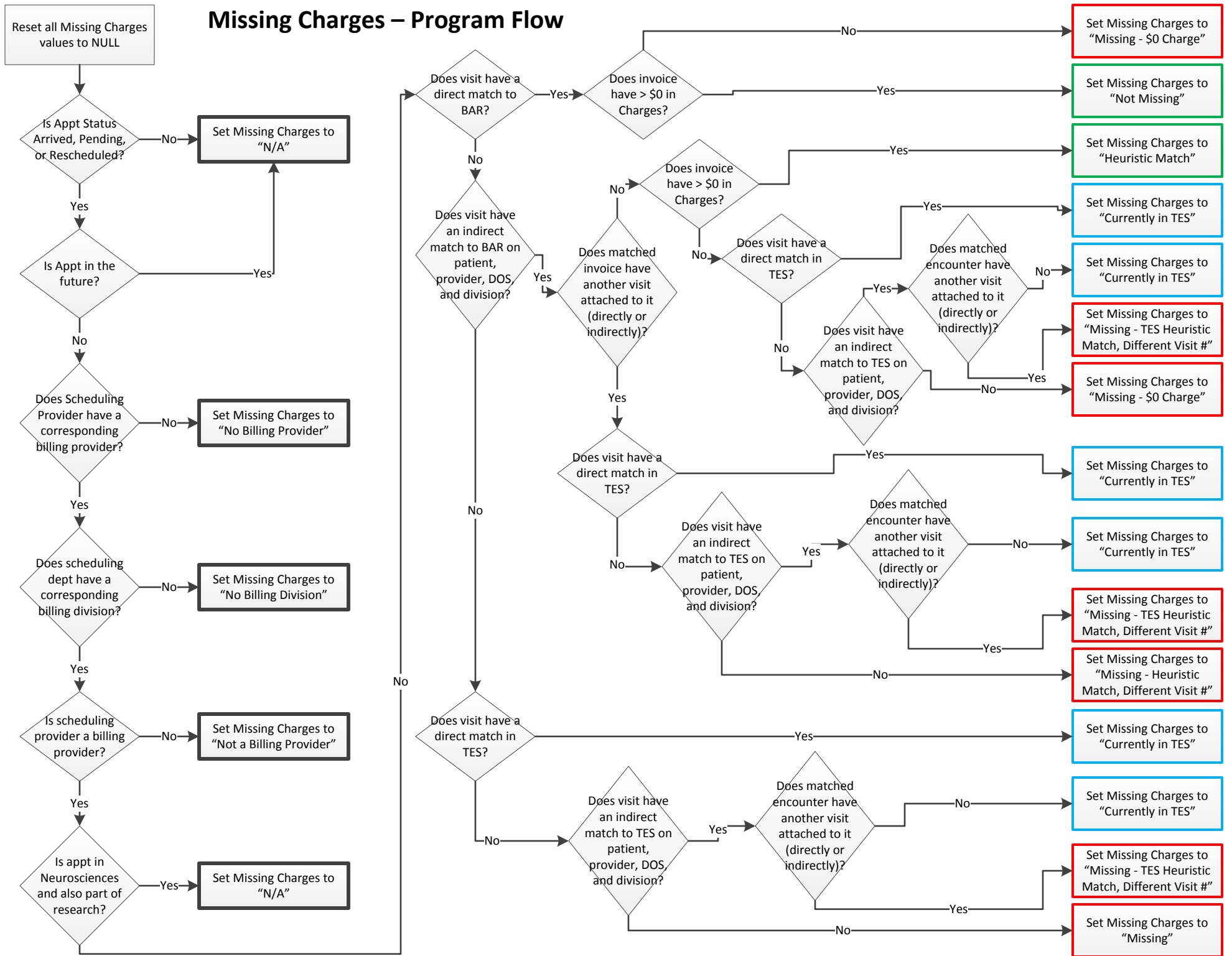


Missing Charges – Program Flow



1. Set All N/A and Non-Corresponding records
2. Set direct match to BAR records
3. Set Heuristic Match Records (results can be match, \$0 charge, or match but conflict on visit #)
4. Look for TES matches for any records that are still missing (this includes missing, \$0 charge, match but conflict on visit #)
5. Anything remaining is missing

In other words:

- Any kind of match (direct match, heuristic match) overrides TES or Missing statuses (missing, \$0 Charge, or match but conflict on visit #)
- Any kind of TES match (direct or heuristic) overrides a missing status (missing, \$0 Charge, or match but conflict on visit #)